

SOWELL ROAD LLC.  
C-2

SOWELL ROAD (100' R.O.W.)

SUNFLOWER FARMS, LLC.  
C-2  
/

3  
SOWELL ROAD LLC.  
C-2

GLUCKSTADT SECURITY STORAGE, LLC.  
C-2

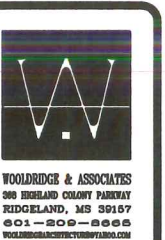
**SITE PLAN**  
SCALE 1"=50'-0"

C-2 COMMERCIAL ZONING  
SITE AREA 49,789SF  
BUILDING AREA 3,600SF  
AREA COVERAGE 7.2%

PARKING REQUIRED  
3,000SF(WAREHOUSE) /1,000 = 3 SPACES  
600SF(OFFICE)/ 300 = 2 SPACES  
PROVIDED SPACES = 8 SPACES

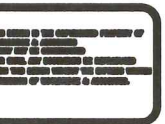


REVISIONS	BY



WOODRIDGE & ASSOCIATES  
300 IBERDIA COUNTY PARKWAY  
RIDGELAND, MS 39107  
601-209-2665  
WWW.WOODRIDGE-AND-ASSOCIATES.COM

**Capchior Office Building**  
Scott Hammack  
Lot 2 Sowell Road Commercial  
Gluckstadt, Mississippi



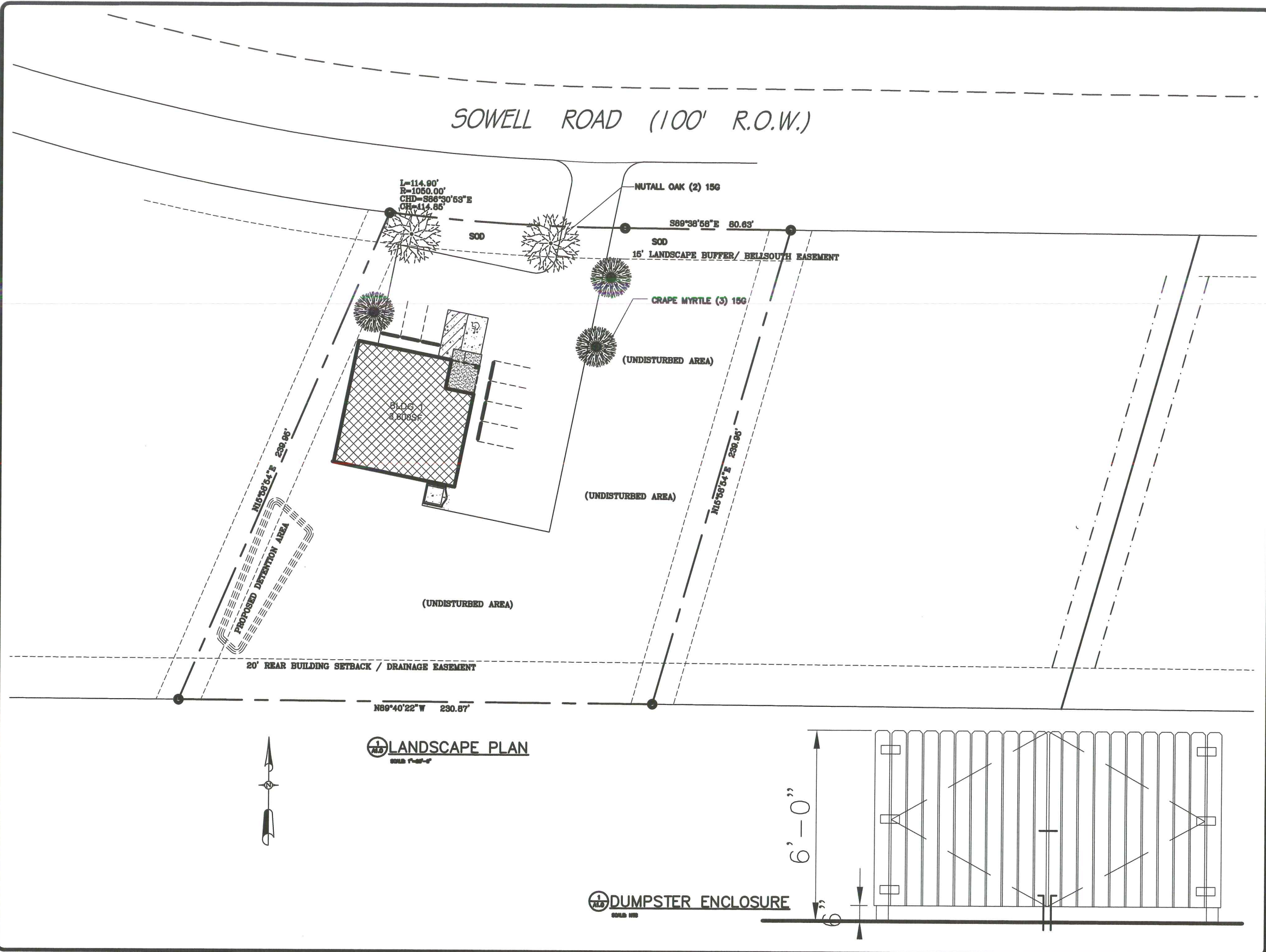
9/16/19

**C1.0**

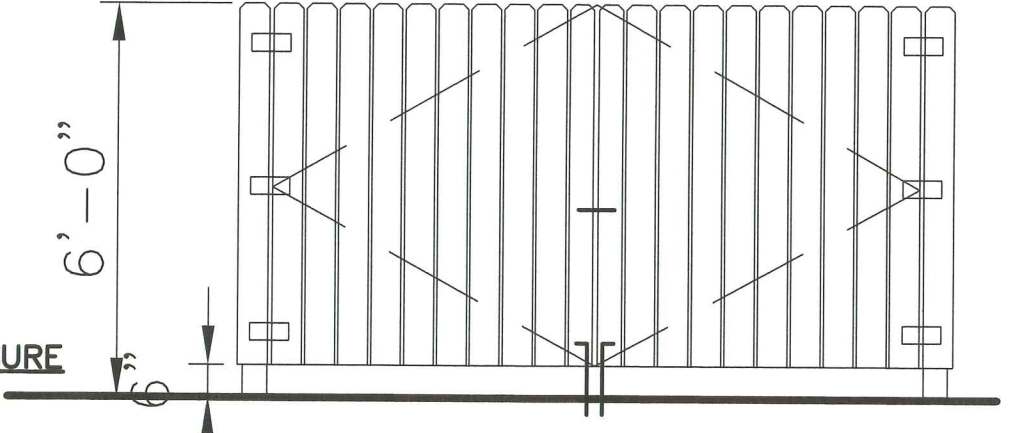
MAYOR&BOARD.dwg

6/15/2001 9:21 AM

Woodridge & Associates



**DUMPSTER ENCLOSURE**  
SOLID 1/8"



REVISIONS	BY



**WOODRIDGE & ASSOCIATES**  
 800 BIRLAND COUNTY PARKWAY  
 REDLAND, MS 39157  
 601-209-2826  
 WWW.WOODRIDGEANDASSOCIATES.COM

**Capchior Office Building**  
 Scott Hammack  
 Lot 2 Sowell Road Commercial  
 Gluckstadt, Mississippi



9/16/19  
**L1.0**

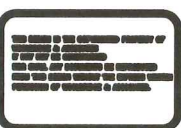


REVISIONS	BY



WOOLRIDGE & ASSOCIATES  
 300 HIGHLAND COLONY PARKWAY  
 RIDGELAND, MS 39157  
 601-200-8866  
 WOOLRIDGEARCHITECTURE.COM

**Capcholor Office Building**  
 Scott Hammack  
 Lot 2 Sowell Road Commercial  
 Gluckstadt, Mississippi

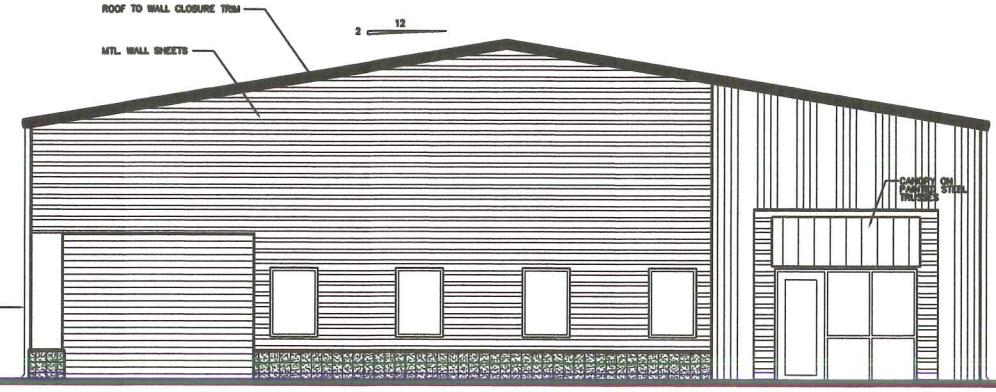


3/12/19

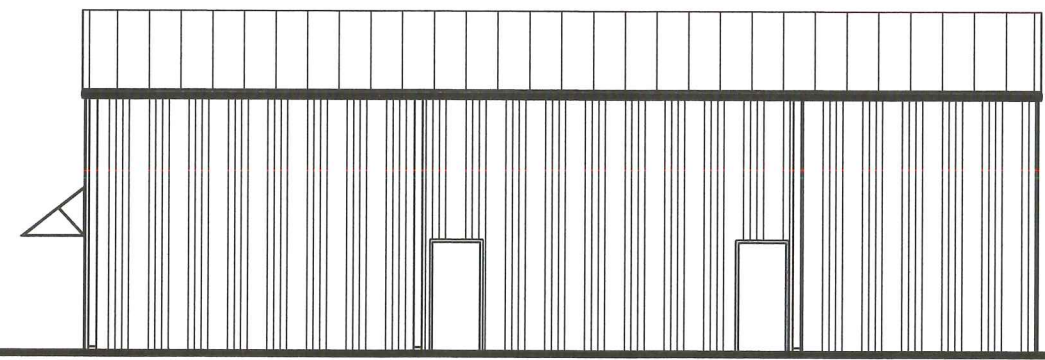
**A3.0**



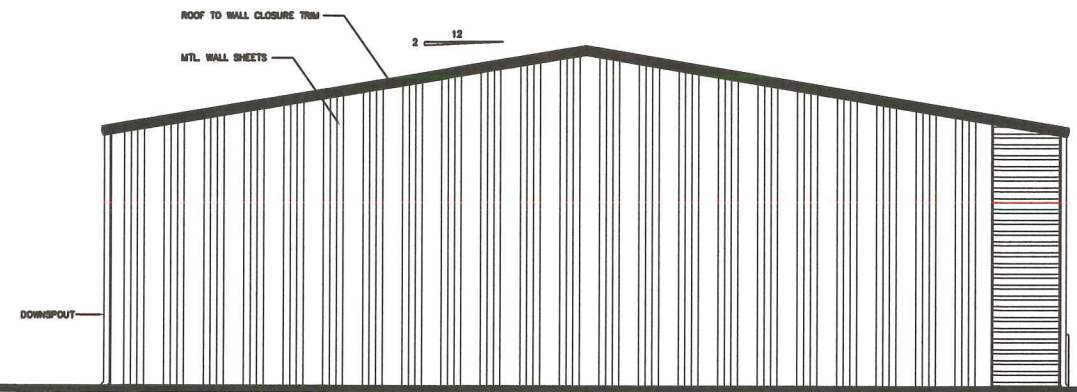
**EAST ELEVATION**  
 SCALE 3/16"=1'-0"



**NORTH ELEVATION**  
 SCALE 3/16"=1'-0"



**WEST ELEVATION**  
 SCALE 3/16"=1'-0"



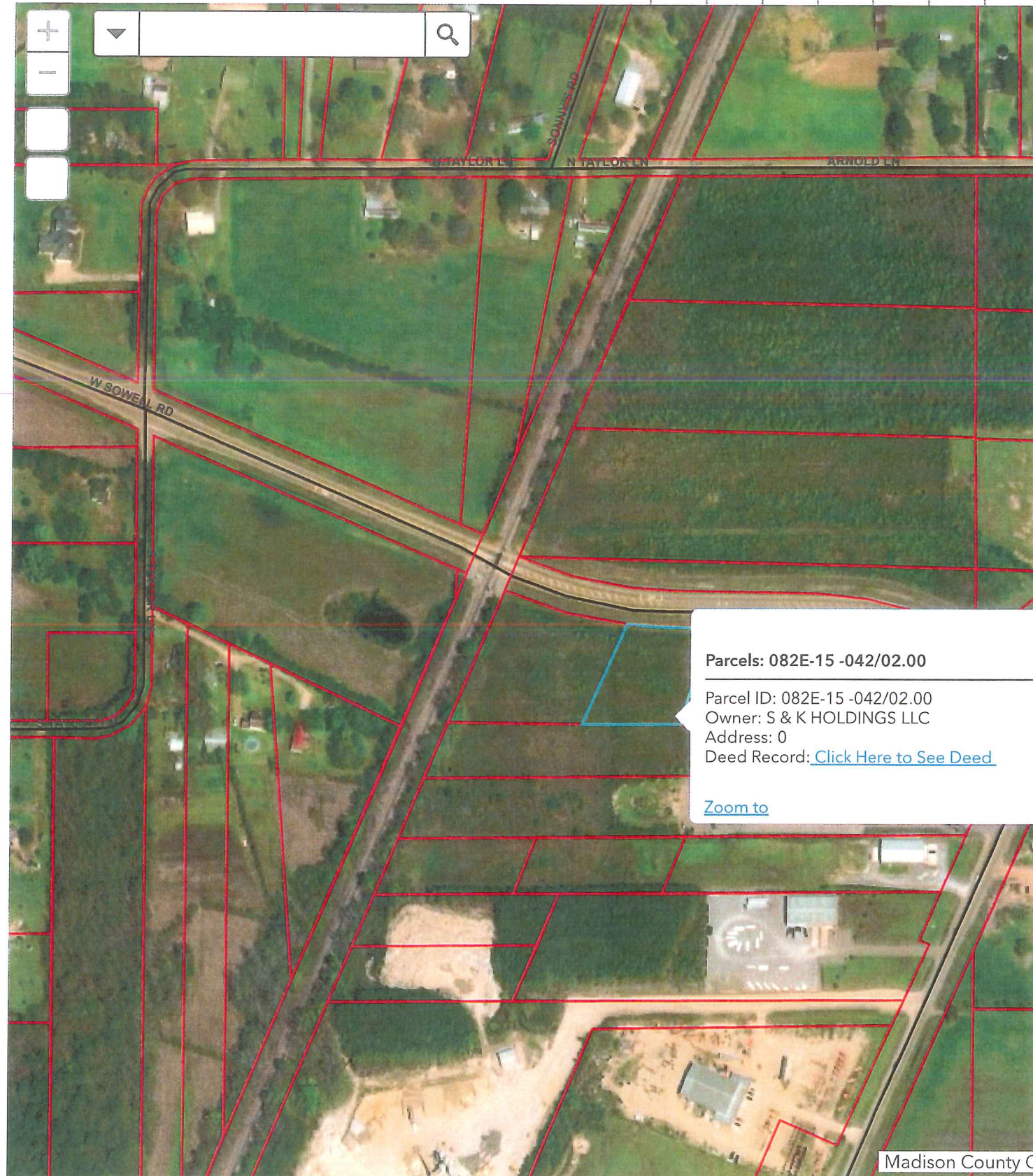
**WEST ELEVATION**  
 SCALE 3/16"=1'-0"

MAYOR&BOARD.dwg

6/15/2001 9:21 AM

Woolridge & Associates





**Parcels: 082E-15 -042/02.00**

---

Parcel ID: 082E-15 -042/02.00  
Owner: S & K HOLDINGS LLC  
Address: 0  
Deed Record: [Click Here to See Deed](#)

[Zoom to](#)

300ft  
-90.073 32.540 Degrees